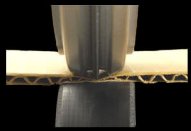


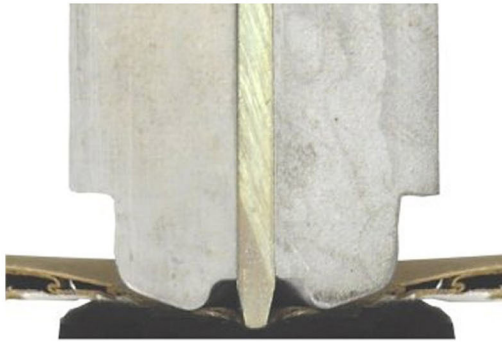


The innovative new scoring system

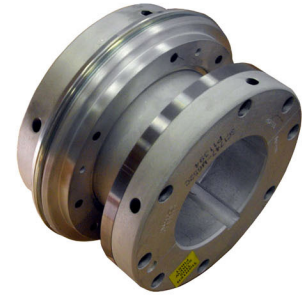


Traditional scoring profiles were designed for a time when most board was made from virgin fiber. Today's board often has high recycled content and lighter weights of liners. Using traditional scoring profiles with recycled board can lead to rolling scores, manufacturer's gap variation, and trouble achieving a consistent score line.

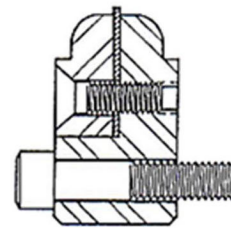
The new G3 scoring system from Sauer System was designed specifically to improve scoring when converting recycled board and other challenging materials.



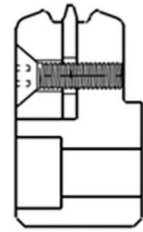
The G3 scoring system will help produce a consistent, well-defined score line.



While traditional male scoring profiles force the board to stretch around the insert during scoring, the G3 male profile incorporates specific geometry which conditions the board and provides relief for the inside liner. The result is improved folding, a proven reduction in manufacturer's gap variation, and a higher quality finished product.



Traditional male profile



New G3 male profile

For more information contact:



Goettsch International Inc.
9852 Redhill Drive
Cincinnati, Ohio U.S.A. 45242
Tel. 1-513-563-6500
Fax 1-513-563-6510
info@goettsch.com